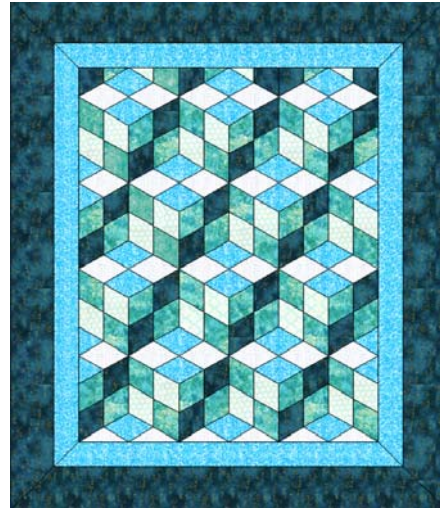


Creating a 3-D Quilt with Quilt-Pro



Open the program and click the **Quilt Wizard** button on the **Ribbon Bar**.

When open, select the following options:

Layout Tab:

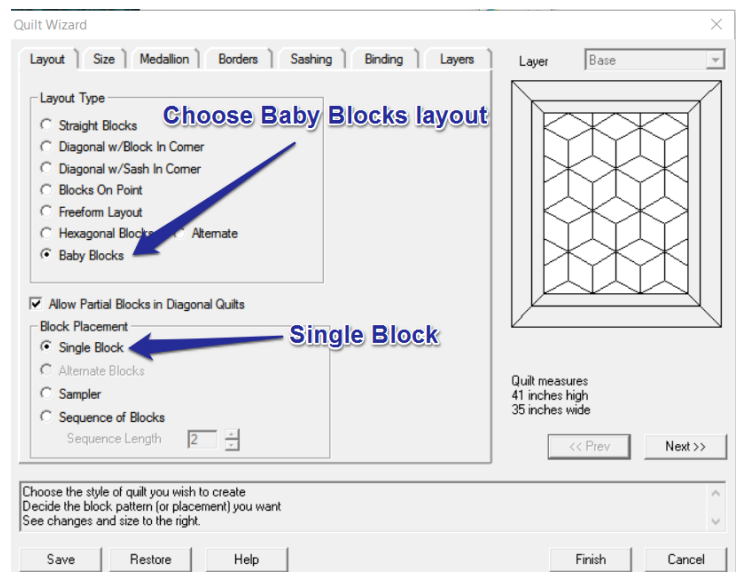
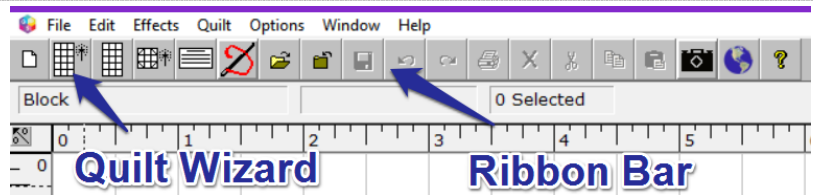
Layout Type: **Baby Blocks**

Block Placement: **Single Block**

Size Tab:

Block Counts: **3 across, 4 down**

Block Size: **Width 8"**



Creating a 3-D Quilt with Quilt-Pro



Look at the preview on the right of your screen; click **Add border** button until there are two borders showing.

Borders Tab:

Border 1:

Border Type: Mitered

Border Width: 2"

Border Repeats:

Vertical and Horizontal:1

Specific Count: 1

Border Placement: Single

Switch to **Border 2:**

Border Type: Mitered

Border Width: 3.5

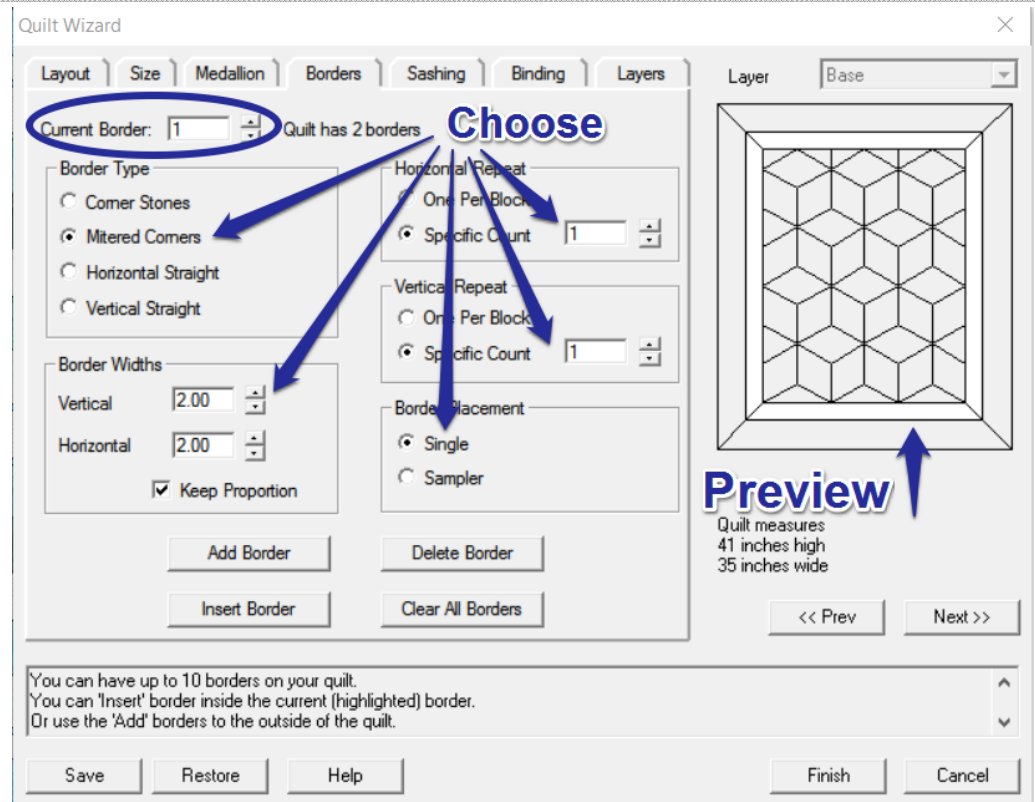
Border Repeats:

Vertical and Horizontal:1

Specific Count: 1

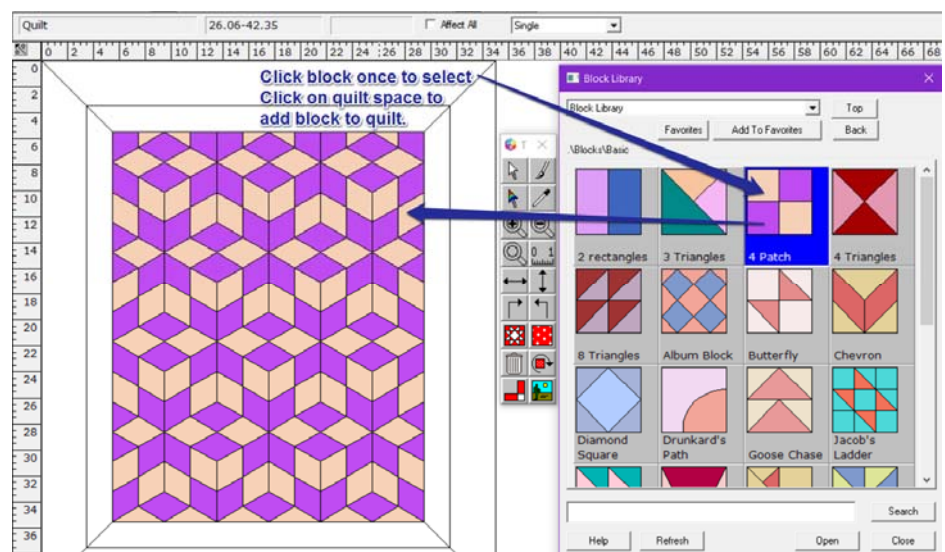
Border Placement: Single

Click **Finish**.



Click on the **Block Library**; choose the **Basics** folder and click once to select the **4 Patch** block.

Then move your cursor to blank block space on the quilt and click once. The quilt will be filled in with the block.



If you have any questions about this lesson, please contact Tech Support [here](#).

Creating a 3-D Quilt with Quilt-Pro



As you look at the quilt image to the right, try to "see" the different levels and sides to the cube made up by the block. There are 3 main color the top (1) of the block, the left side (3) and the right (2).

The top (1) or lightest color block is where the light hits the block with the most light so it is the brightest of the three.

For the left and right, you may choose either the right or left side for the medium colors. For this lesson, I choose the right side for medium shades and the left for the darker shade.

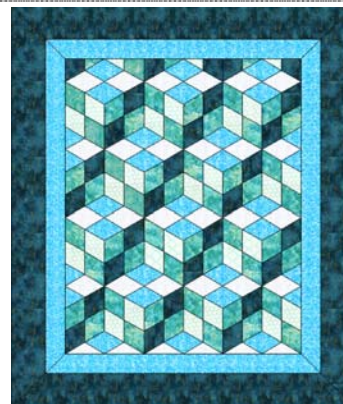
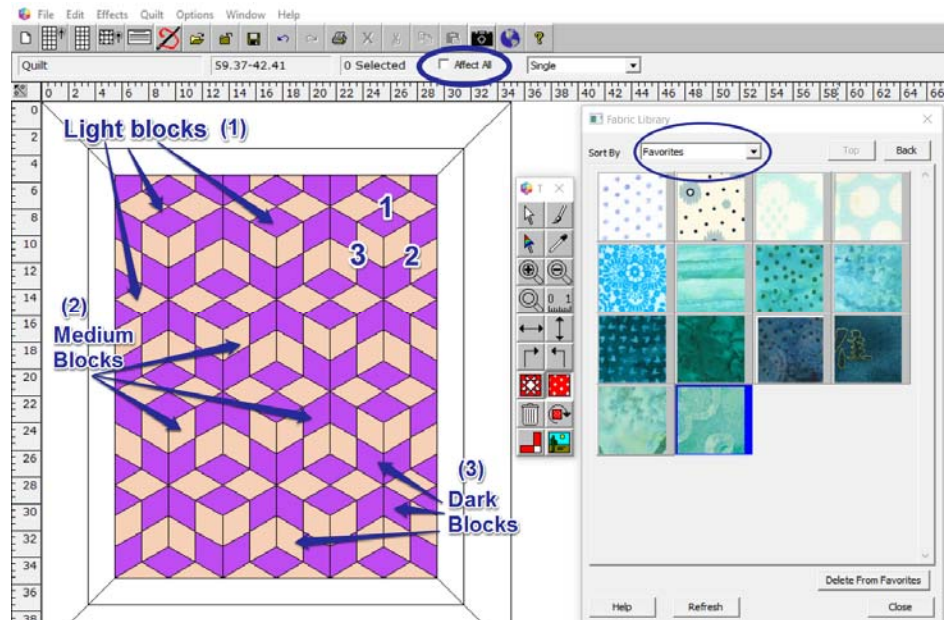
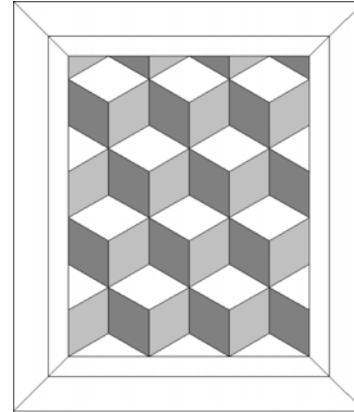
With that in mind, open the Fabric Library and choose 3-4 of each of the light, medium and dark colors all of the same hue.

Add them to your Favorites as I have here. For this lesson I selected Teal as the main hue.

Before beginning to color the block, unselect the **Affect All** option circled just above the quilt in the image to the right.

Color the quilt:

And Save.



If you have any questions about this lesson, please contact Tech Support [here](#).