

# 3 Ways to Use the Cutting Layout

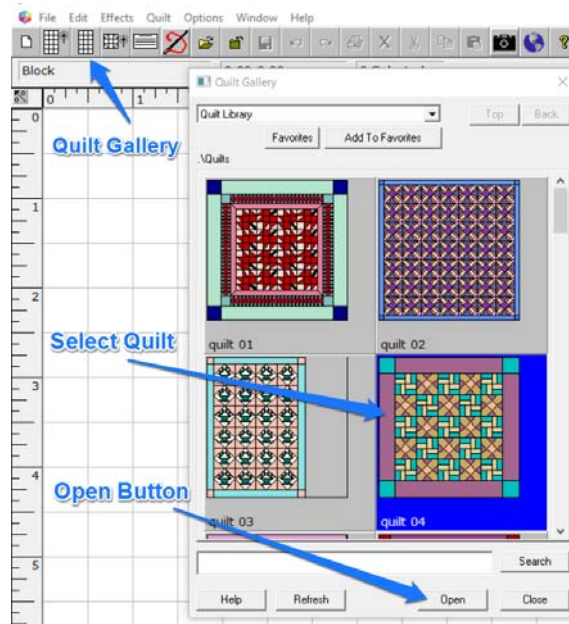
## in Quilt-Pro



With the Cutting Layout feature, you can see exactly how Quilt-Pro is laying out patches on fabric when it estimates yardage. You can use this feature if you don't agree with Quilt-Pro's yardage estimates and want to check them. You can also use this feature to see how best to cut your patches for a quilt. You can edit the layout when creating pattern instructions.

Let's start by using the Cutting Layout to check if the yardage estimates are accurate.

Open the **Quilt Gallery**; select the **quilt 04** and click the **Open** button.



We won't be changing the colors of the quilt in this lesson; but feel free to do so yourself.

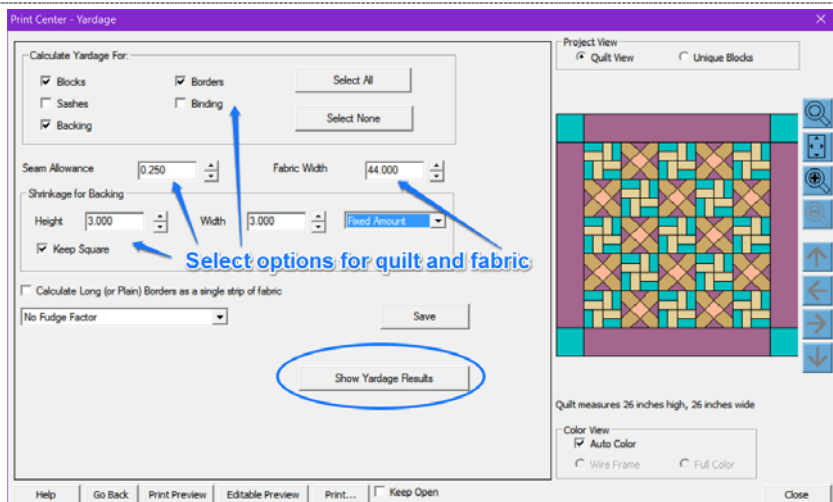
To check the yardage requirements for the quilt, click on the **File** menu, then click **Print Center**.

In the **Calculate Yardage For** section, select the options pertinent to the quilt. In this instance, select **Blocks**, **Borders**, and **Backing**.

If necessary, adjust the sizes for Seam Allowance and Fabric Width. The default setting for these options is: **Seam Allowance .25** and **Fabric Width 44"**.

If calculating the backing at this time, adjust the Shrinkage for Backing amounts. The default is 3"; increase or decrease as desired.

Click Show Yardage Result.



# 3 Ways to Use the Cutting Layout



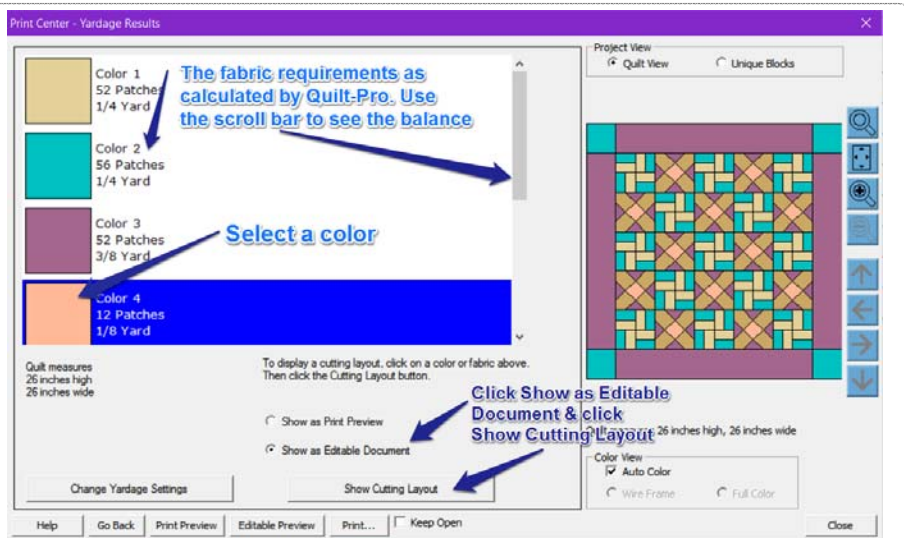
## in Quilt-Pro

In the next screen you'll see all of the fabrics in the quilt.

Use the scroll bar to see more.

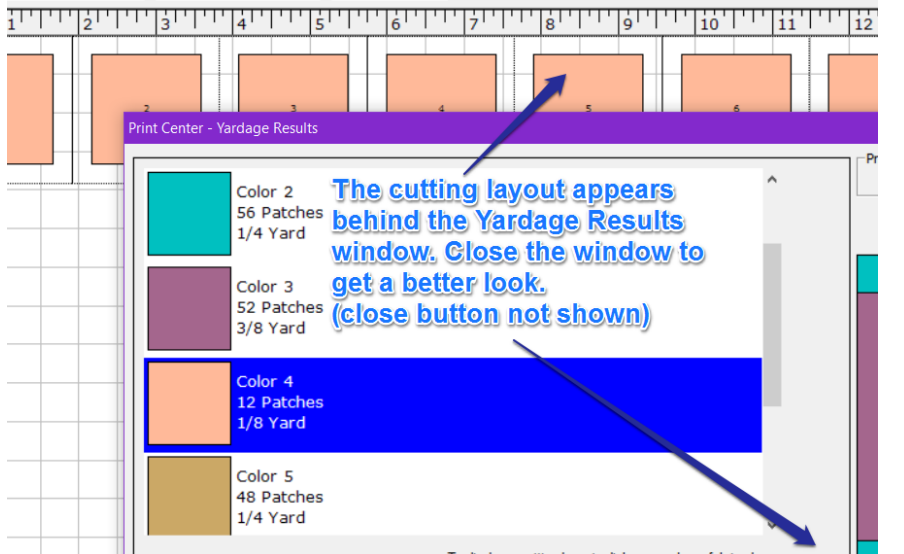
If one calculation looks off to you select that color. Then select **Show as Editable Document**.

Then click **Show Cutting Layout**.



When you click the **Show Cutting Layout**, it will appear behind the **Yardage Results** window.

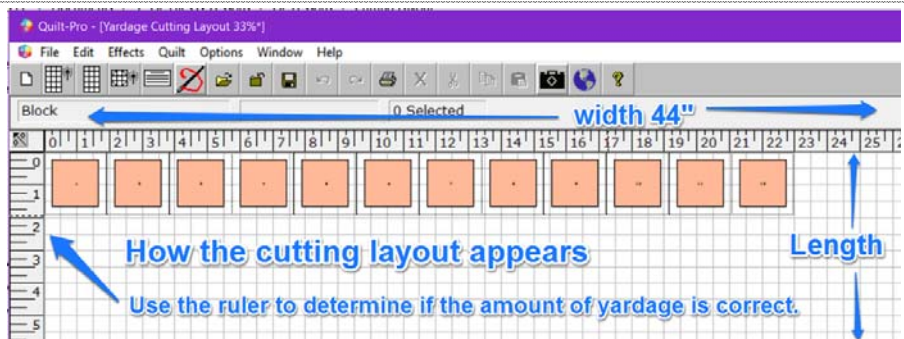
Close the window to get a better look.



The Cutting Layout appears.

Use the Ruler to determine if the amount is correct. In this case it is. The width of the fabric is shown across the screen and the number of yards needed is shown down the left side. Each yard is 36" down.

**Note:** the smallest amount calculated for this color was 1/8 yard as that is the smallest amount sold at quilt stores. In some stores, it may be as much as 1/4 yard.



If you have any questions about this lesson, please contact Tech Support [here](#).

# 3 Ways to Use the Cutting Layout

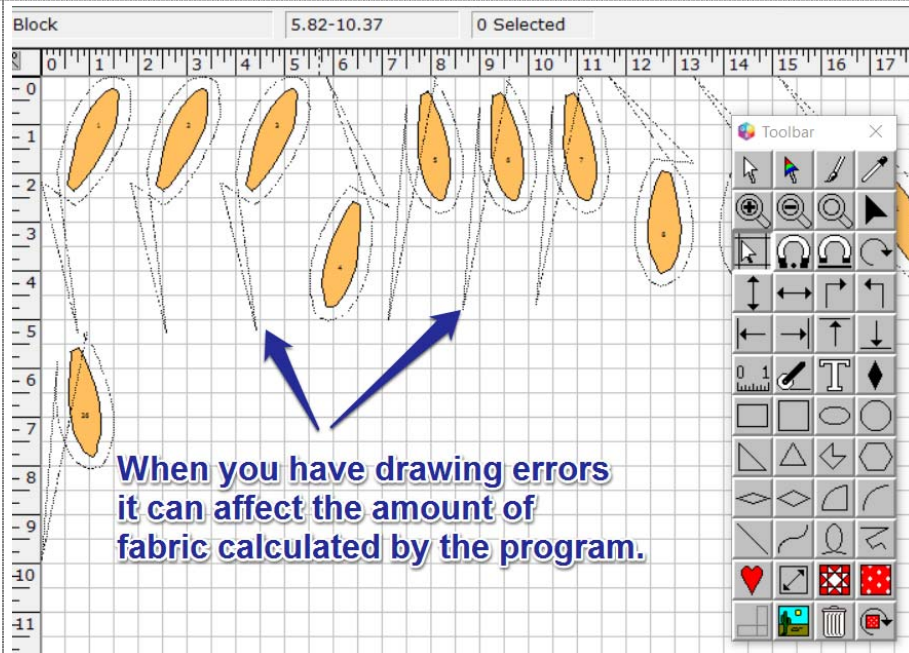


## in Quilt-Pro

We said earlier that you can also use this feature to see why the program is showing a large fabric calculation.

This is a flower block I drew so that the lines that make up the flower petal didn't meet up. The lines of the flower petals don't meet correctly and it throws the seam allowance off. This causes the yardage calculation to be off as well.

Cancel the cutting layout and go back and adjust/correct the block. When you make the adjustments to the block, the yardage amount calculated should be correct.



Quilt pattern designers and kit makers often include smaller bits of fabric in the kit and you can show customers how to cut the templates from these small scraps.

For example, you include a 6" x 12" scrap and want to show them how to cut all the squares.

Draw a 6 x 12" rectangle using the rectangle tool.

Copy or move the squares and the seam allowance on top of the scrap patch. Delete the original squares and print.

