

In Quilt-Pro 6

MyBlueprint.com, defines "a Bargello quilt as one made of strips of fabric sewn together to create the appearance of movement. These patterns are less complicated than they look so they should be fine for beginning **quilters**."

They go on to say: "To make a Bargello quilt, **strips are first cut at a specific width and sewn together**. Then these groupings of strips are sewn into a tube with the seam allowances facing out. The tube is then cut into the necessary widths and opened with a seam ripper at specified seams to create blocks. After all of the blocks are finished, they can be placed in different formations to create all kinds of overall patterns, from triangles and diamonds to waves and flames."

What that means for Quilt-Pro users is that, your regular method of figuring your fabric cutting instructions, whether by template or strip piecing charts, won't work for this type of quilt. You'll only be using Quilt-Pro to design the flow and movement of the quilt and give you an idea of how much yardage you need.

Speaking of yardage, precut rolls of 2.5" fabric strips, known as Jelly Rolls, are fabulous for this project. Cutting your own fabric into strips will also work. Don't be afraid to try other widths as well but do keep the widths for all fabrics the same or quilt movement may be choppy.

We'll start by creating a simple pattern made up of fabric strips that will be made up of our favorite colors: While this lesson isn't on how to construct a Bargello quilt, this is how you would sew your strips together.



At the end of this lesson you'll find links to several videos that discuss Bargello quilt construction .

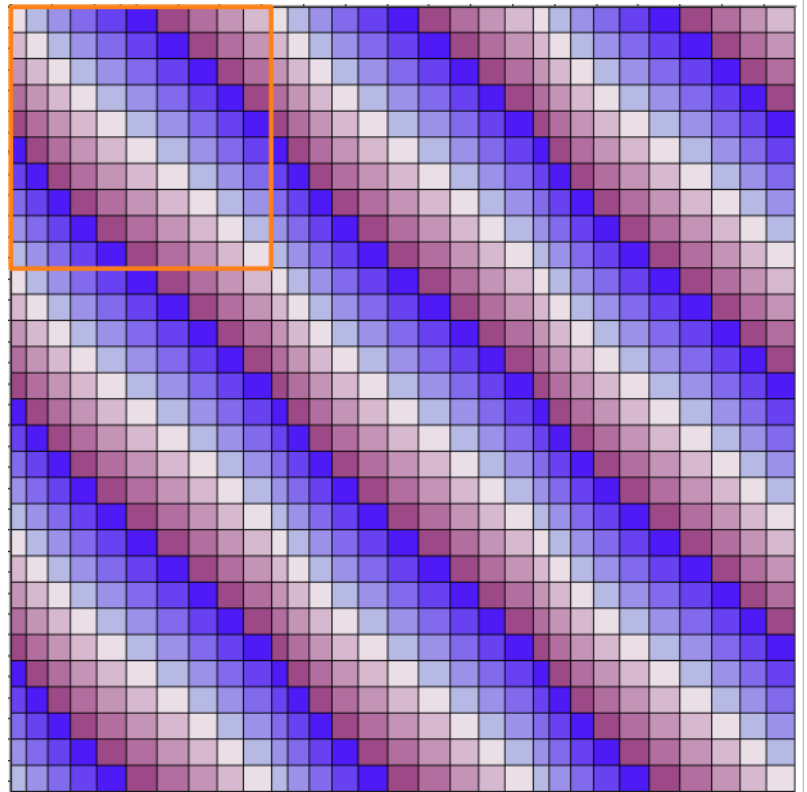
If you have any questions about this lesson, please contact Tech Support [here](#).

This pattern starts with a 2.5" wide horizontal strip 25" long, then used the rotary cutter to cut the strip vertically as indicated in the pattern. The blocks is 25" square. Then duplicated the strip 10 times. Full drawing instructions later in this lesson.

Please note: when you are actually cutting the fabric strips, you will be adding 1/2", for the seam allowance, to the amounts shown below.

1.5"	2.25"	2.75"	3.0"	2.75"
2.0"	2.5"	3.0"	2.75"	2.75"

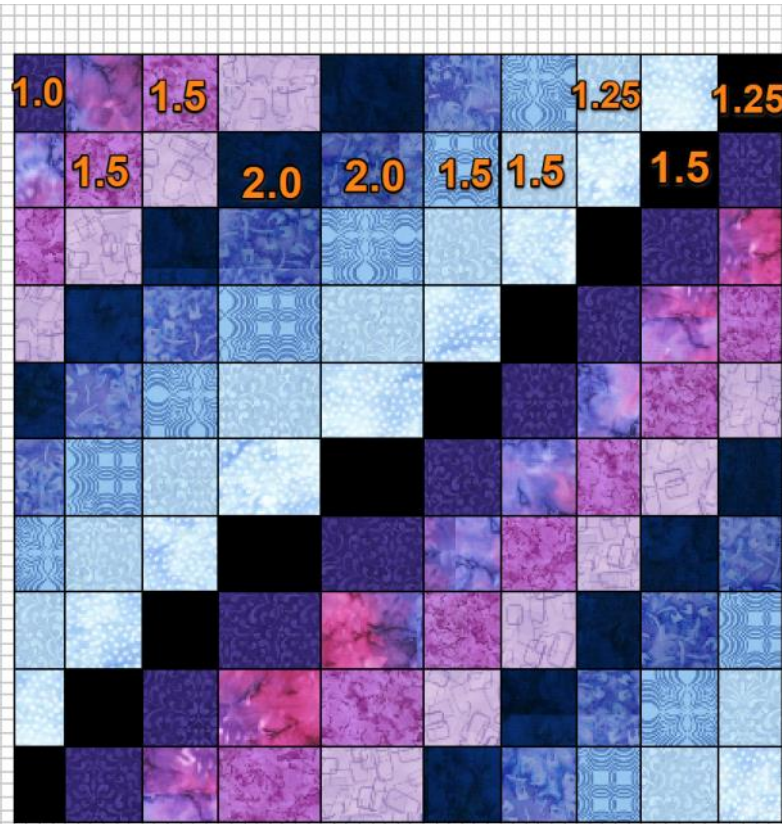
The quilt is a straight layout, 3 blocks down and across. I've highlighted the actual block in the quilt image.



Creating a Bargello Quilt

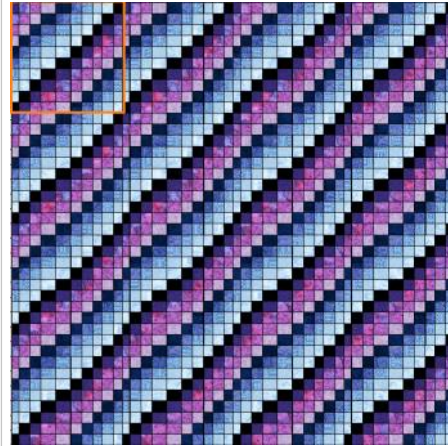


This pattern is 15" square and is made up of 10 horizontal stripes that are 1.5 inches wide x 15" long, then cut into vertical strips as shown in the diagram.



The quilt is 4 across and 4 down, blocks are 15" square.

Use **Horizontal Flip** tool to change the design from this to



To this:



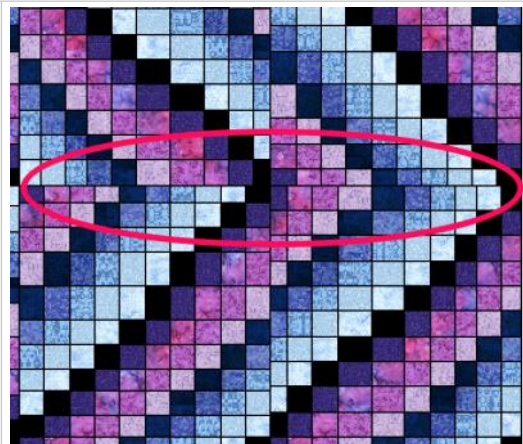
Tip:

Because this block is **square**, you may use the flip tools or the rotate tools to change your design.

However, if your design is **rectangular**, **do not** rotate the block 90 degrees or you will:

Inadvertently change width of the horizontal stripes. Use only the vertical or horizontal flip tool to change the design.

Bargellos are straight grids. If you look at each quilt, you will see straight lines across and down. You need to maintain that grid and rotating some of the blocks may throw the grid out of line. See the image.



Creating a Bargello Quilt



Drawing the Bargello pattern:

Using the **Rectangle** tool, draw any size horizontally oriented rectangle. Size doesn't matter.

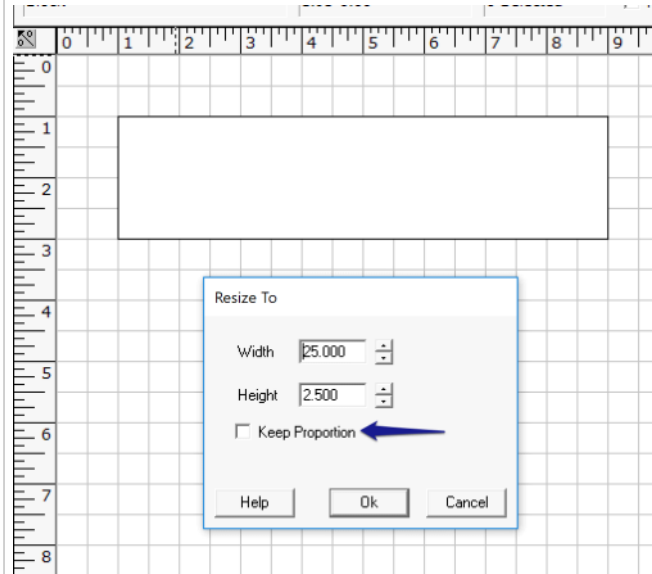
Click on the **Effects** menu and select **Resize to**.

Unselect **Keep Proportion** and change the size to:

Width: 25.00"

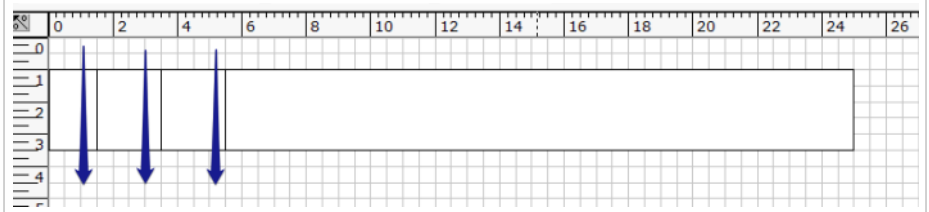
Height: 2.5"

Click OK.



Using the **Rotary Cutter** on the toolbar, we will make 9 cuts so that we end up with 10 strips. Make each strip the following widths:

1.5", 2.0", 2.25", 2.5", 2.75", 3.0", 3.0", 2.75", 2.75", 2.75".

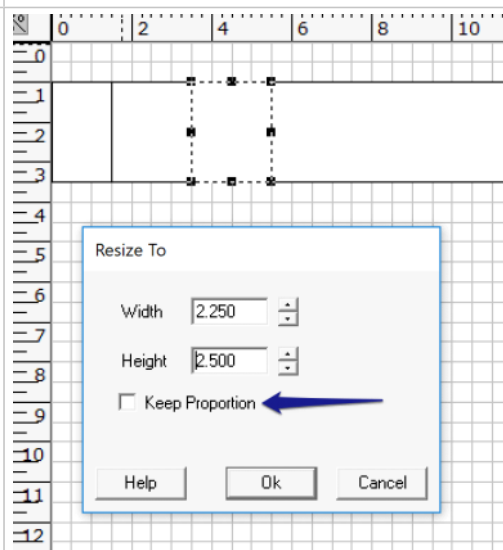


Don't worry if you have a hard time making the cut the correct width. Here is how to adjust it:

Select the patch you think is off. Then click **Effects, Resize to...**

As you can see the third patch was off just a tad. It should be:

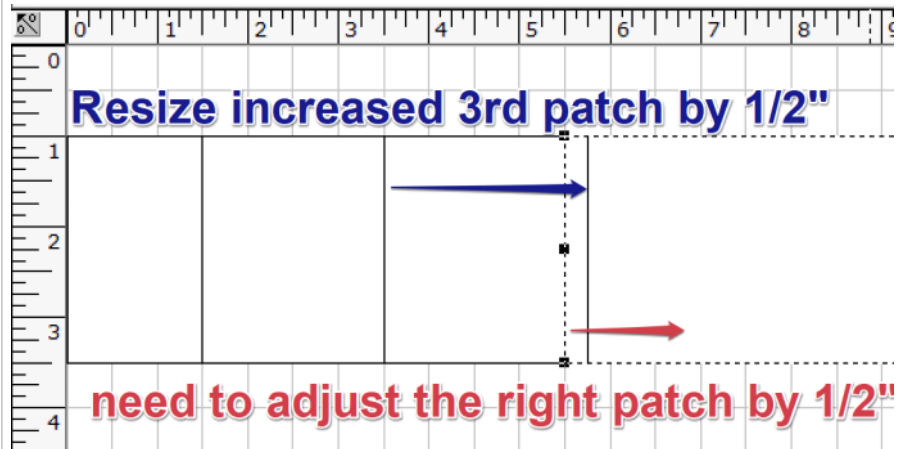
Width: 2.25" Height: 2.5"



Drawing the Bargello pattern, cont:

Be aware that when you enlarge one patch. The surrounding patches may need to be adjusted so they don't overlap.

And be sure to maintain the final size at 25" x 25" with no overlapping patches.



Once the lines are cut and you're ready to move on, choose **Edit** menu, **Select All**.

Then choose the **Effects** menu and choose **Group**.

With the patches still selected, right click the patch and choose **Duplicate** (or use **Edit** menu/**Duplicate** or **Ctrl-D**). Then move the new rectangle set into position below the first one.

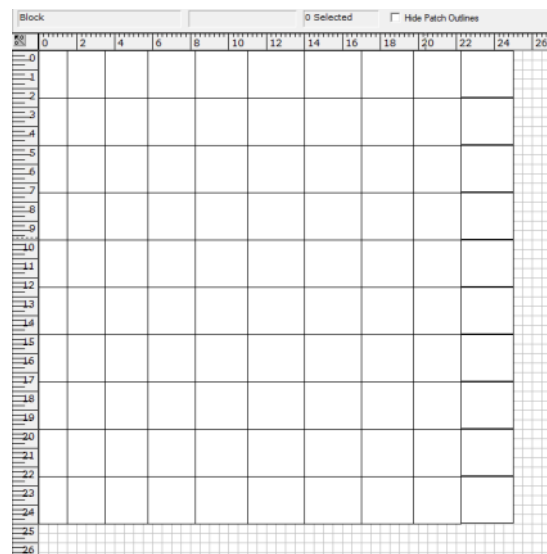
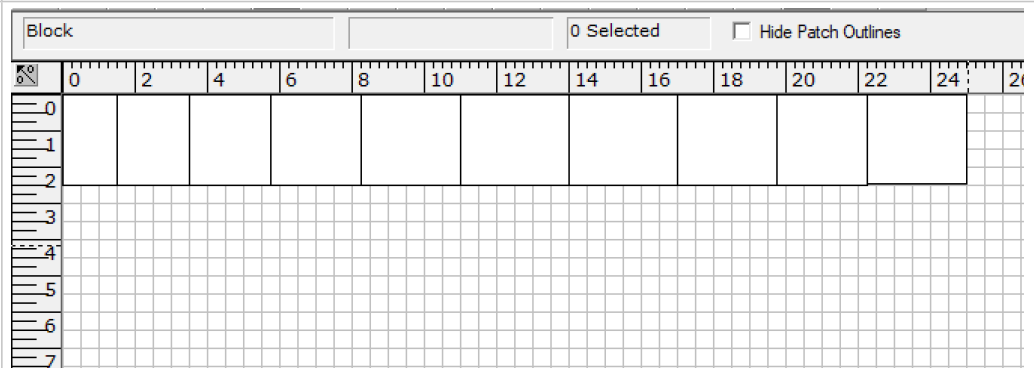
Continue in the same manner until you have 10 rectangle sets.

Tip:

If no patches are selected, the **Duplicate** option will create duplicate of everything on the screen.

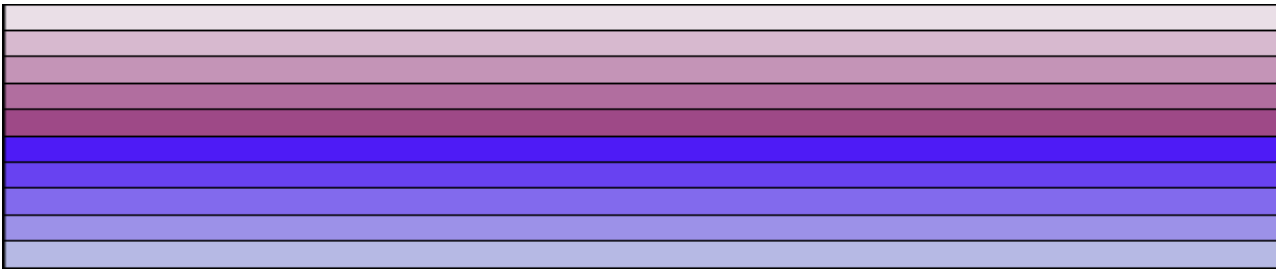
To limit what is duplicated, select only the patches you want duplicated.

To select multiple patches, press and hold the **Shift** key while you click the patches you want to select.

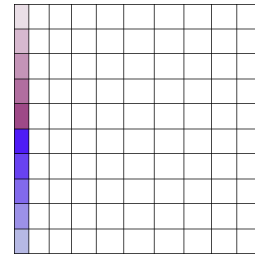


Coloring the Bargello quilt block:

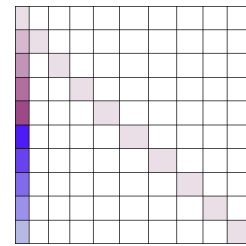
If you will recall back on Page 1 of this lesson, we discussed how the fabric strips will be sewn together.



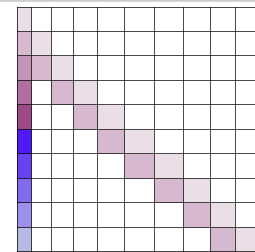
So we will color the first row of the quilt block the same way.



Then using the Color Picker tool, select the first color and fill in the rows diagonally. Notice that coloring drops down one patch in each row.

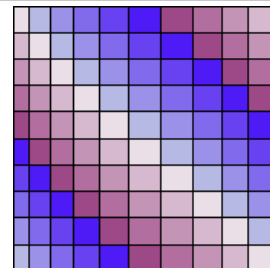


Use the Color Picker tool to pick up the second color and continue the second row diagonally:



Continue the same with the rest of the colors. Note that the last color of the first row will run the full length diagonally against the first color of the first row.

When the coloring is complete, save your block. (**File** menu, **Save As.**)



Creating the quilt

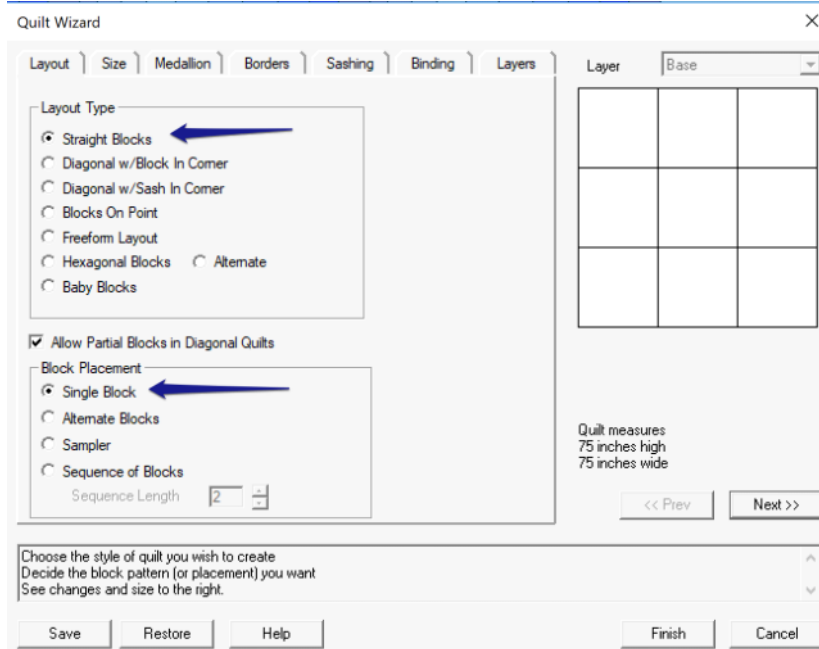
With the block on-screen, click the Quilt Wizard button.



Layout tab:

Layout Type: **Straight**

Block Placement: **Single block**



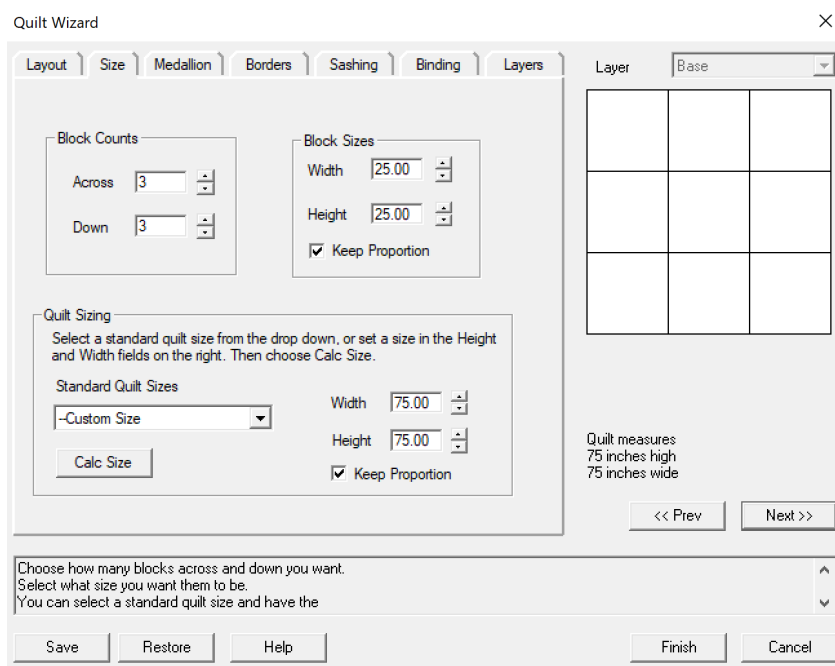
The screenshot shows the 'Layout' tab of the Quilt Wizard. The 'Layout Type' section has 'Straight Blocks' selected with a blue arrow. The 'Block Placement' section has 'Single Block' selected with a blue arrow. The 'Quilt measures' are 75 inches high and 75 inches wide. The 'Layer' dropdown is set to 'Base'. The 'Next >>' button is visible.

Size tab:

Block Counts: **3 across, 3 down**

Block Sizes: **25.00"**

Keep Proportion: **Checked**



The screenshot shows the 'Size' tab of the Quilt Wizard. The 'Block Counts' section has 'Across' set to 3 and 'Down' set to 3. The 'Block Sizes' section has 'Width' set to 25.00 and 'Height' set to 25.00, with 'Keep Proportion' checked. The 'Quilt Sizing' section has 'Standard Quilt Sizes' set to '-Custom Size', 'Width' set to 75.00, and 'Height' set to 75.00, with 'Keep Proportion' checked. The 'Quilt measures' are 75 inches high and 75 inches wide. The 'Layer' dropdown is set to 'Base'. The 'Next >>' button is visible.

Creating a Bargello Quilt



Click the Borders tab, and add or delete a border so that there are two borders for this quilt.

Current Border: 2 Quilt has 2 borders

Border Type

- Corner Stones
- Mitered Corners
- Horizontal Straight
- Vertical Straight

Horizontal Repeat

- One Per Block
- Specific Count

Vertical Repeat

- One Per Block
- Specific Count

Border Widths

Vertical: 2.00

Horizontal: 2.00

Keep Proportion

Border Placement

- Single
- Sampler

Add Border Delete Border

Insert Border Clear All Borders

Current Border: 1

Border Type: **Mitered Corners**

Border Widths:
Vertical: 2.00
Horizontal: 2.00

Horizontal Repeat:
Specific Count: 1

Vertical Repeat:
Specific Count: 1

Border Placement: Single

Quilt Wizard

Layout | Size | Medallion | Borders | Sashing | Binding | Layers

Current Border: 1 Quilt has 2 borders

Layer: Base

Border Type

- Corner Stones
- Mitered Corners
- Horizontal Straight
- Vertical Straight

Horizontal Repeat

- One Per Block
- Specific Count: 1

Vertical Repeat

- One Per Block
- Specific Count: 1

Border Widths

Vertical: 2.00

Horizontal: 2.00

Keep Proportion

Border Placement

- Single
- Sampler

Quilt measures
84 1/2 inches high
84 1/2 inches wide

Add Border Delete Border

Insert Border Clear All Borders

<< Prev Next >>

Current Border: 2

Border Type: **Mitered Corners**

Border Widths:
Vertical: 5.00
Horizontal: 5.00

Horizontal Repeat:
Specific Count: 1

Vertical Repeat:
Specific Count: 1

Border Placement: Single

Quilt Wizard

Layout | Size | Medallion | Borders | Sashing | Binding | Layers

Current Border: 2 Quilt has 2 borders

Layer: Base

Border Type

- Corner Stones
- Mitered Corners
- Horizontal Straight
- Vertical Straight

Horizontal Repeat

- One Per Block
- Specific Count: 1

Vertical Repeat

- One Per Block
- Specific Count: 1

Border Widths

Vertical: 5.00

Horizontal: 5.00

Keep Proportion

Border Placement

- Single
- Sampler

Quilt measures
90 1/2 inches high
90 1/2 inches wide

Add Border Delete Border

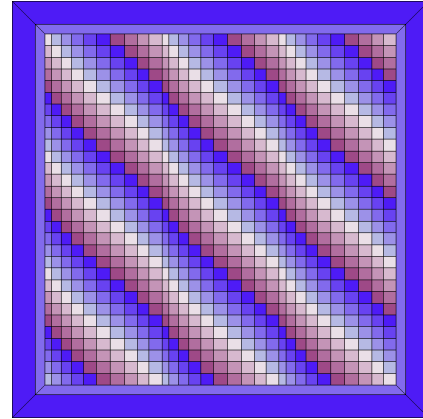
Insert Border Clear All Borders

<< Prev Next >>

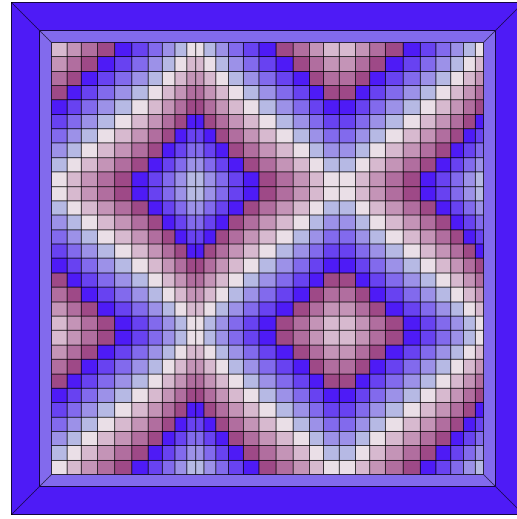
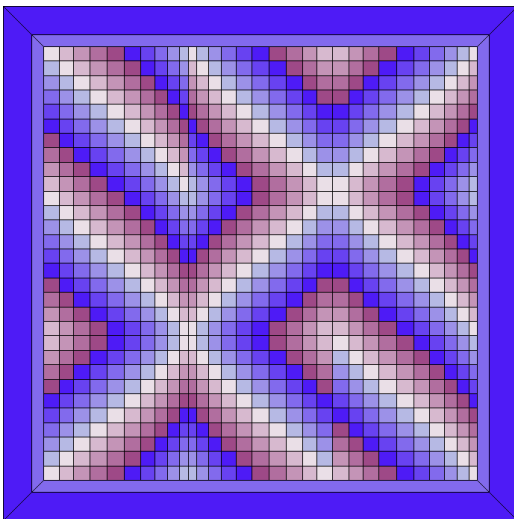
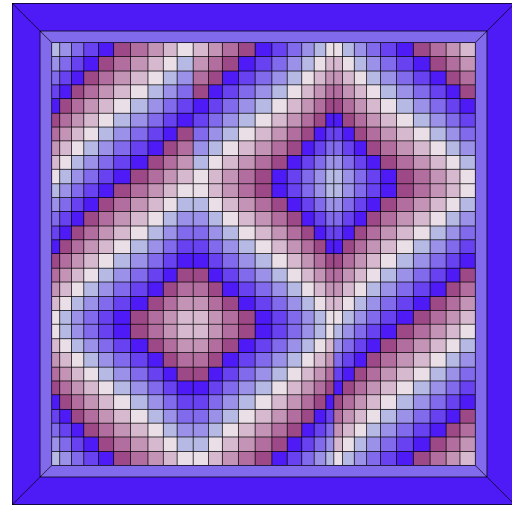
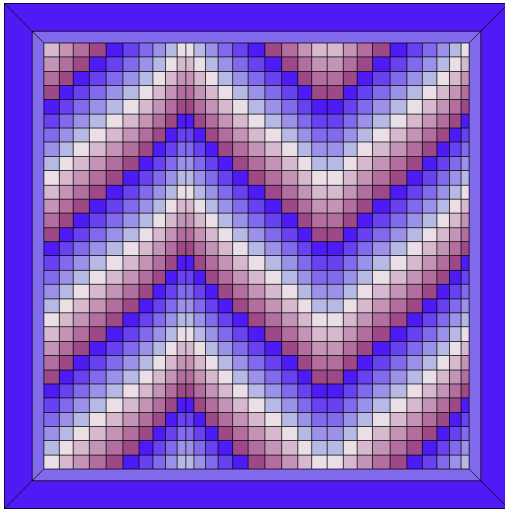
Creating a Bargello Quilt



Click **Finish**:



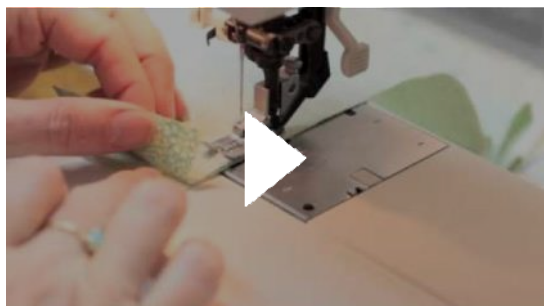
Using ONLY the **Flip Horizontal** and **Flip Vertical** tools on the toolbar, you can get a variety of patterns:



Sewing instructions for Bargello Quilt

The following YouTube videos have sewing instructions for Bargello quilt patterns. The patterns in the video are not the same as in this Quilt-Pro lesson due to copyright.

[Making a Bargello Quilt with Patti Carey](#)



[Make a Bargello Quilt with Jenny!](#)



[Quilting Quickly: Fire & Ice Bargello Quilt Pattern](#)



[Jelly Roll Rainbow Quilt Tutorial \(Inspired by Man Sewing\)](#)



Other Resources:

[8 Tips for Making Bargello Quilts](#)

[How to Make a Bargello Quilt by Jane Alcock](#)

[170 Beautiful Bargello designs via Pinterest](#)

If you have any questions about this lesson, please contact Tech Support [here](#).