

Ohio Star in a Star Quilt-Pro 6

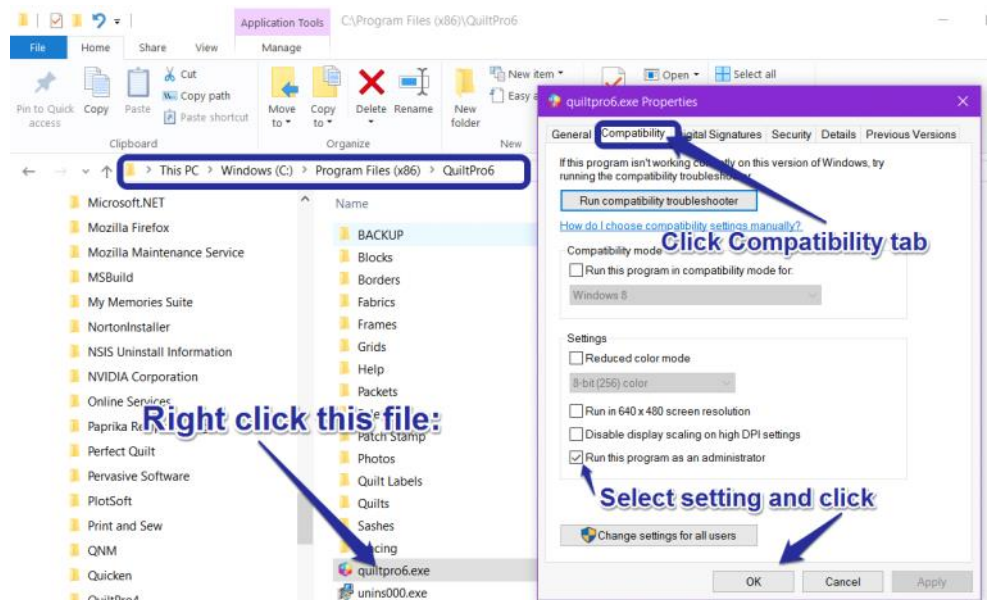
Compatibility Setting:

In order to complete a portion of the lesson, we will need to change the

closed before continuing.

First click the Start button on the lower left of your screen, then File Explorer. When it's open, navigate to C:\Program Files (x86) and look for and open the QuiltPro6 folder. @ Quiltpro6.exe file. Right click on the Quiltpro6.exe file and select Properties then click on the Compatibility tab.

Run this program as an administrator. Click Apply and OK. Close the File Explorer and open Quilt-Pro 6 to begin our lesson.



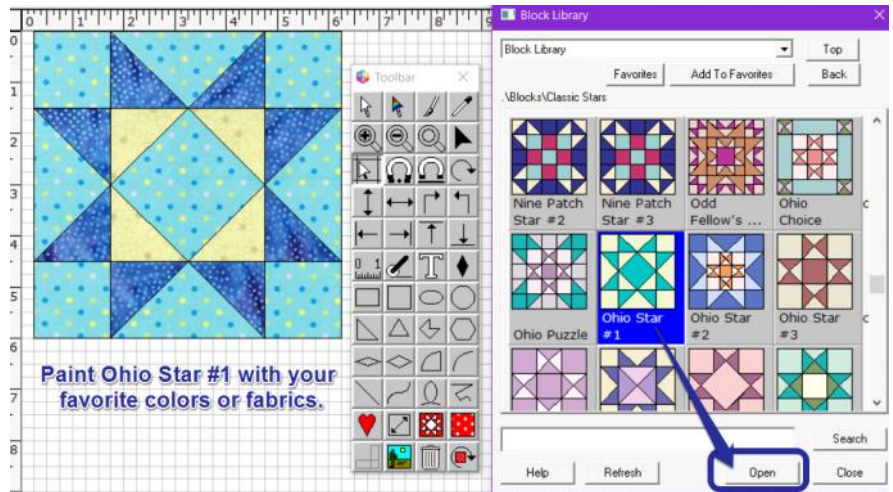
Open the block

Click the Block Library and select the Classic Stars folder.

From the Classic Stars folder, select the Ohio Star #1 block and then click the Open button.

Paint the block in your favorite colors. This project uses blue, yellow, and light green fabrics.

Save the block using the File menu, Save as...



If you have any questions about this lesson, please contact [Tech Support](#)

Ohio Star in a Star

Quilt-Pro 6



Creating a Custom Grid

With the block on screen, click the Options menu, then click Make Grid. The screen will look like the image on the right.

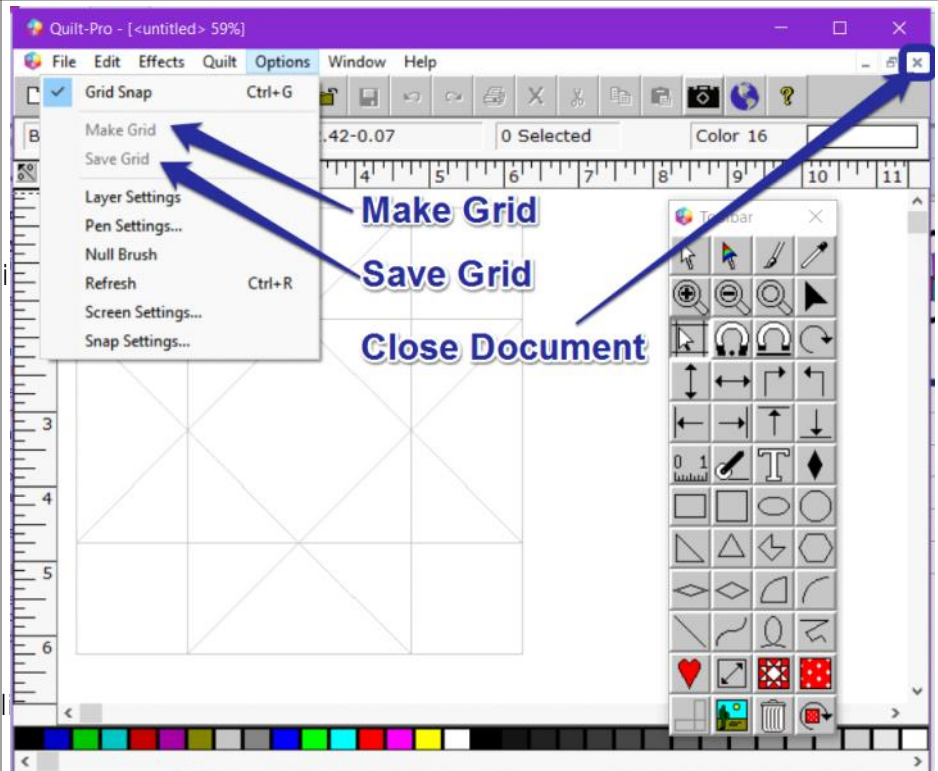
Then click the Options menu again, this time click Save Grid.

QuiltPro should open so you can save the file in the following folder:

C:\Program Files (x86)\QuiltPro6\Grids

Give your custom grid a name. For this lesson I used Star in Star.blk. Then click OK.

Close the Document window by clicking the small X as shown in the image.



Return to the Original Ohio Star Block

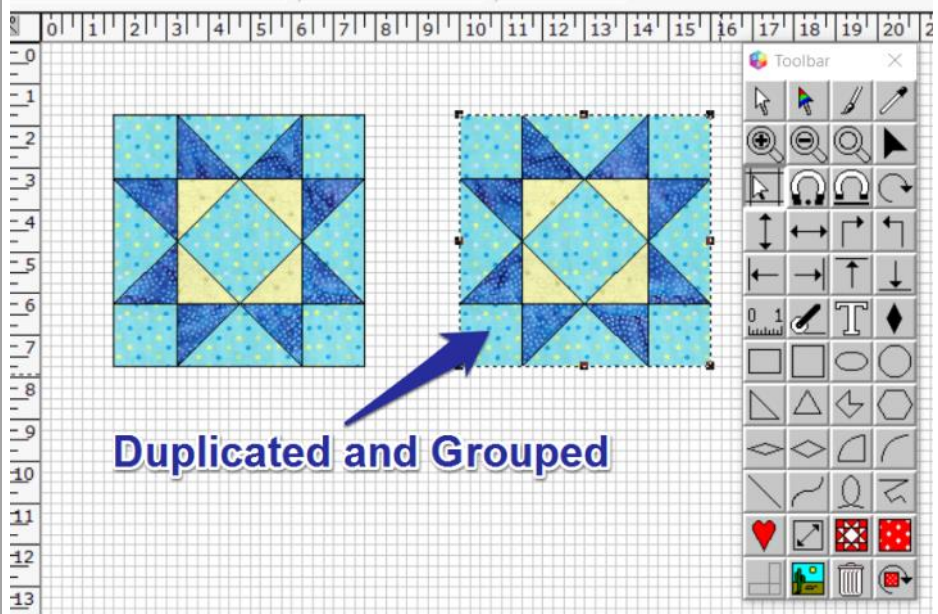
From the Edit menu, choose Select all.

Move the block down and to the right to allow for easy editing.

Then again from the Edit menu, choose Duplicate. A copy of the original block appears "selected."

With the selection box still surrounding the duplicated block, choose Group from the Effects menu.

Move the grouped block so that there is at least 2 inches between it and the original block.

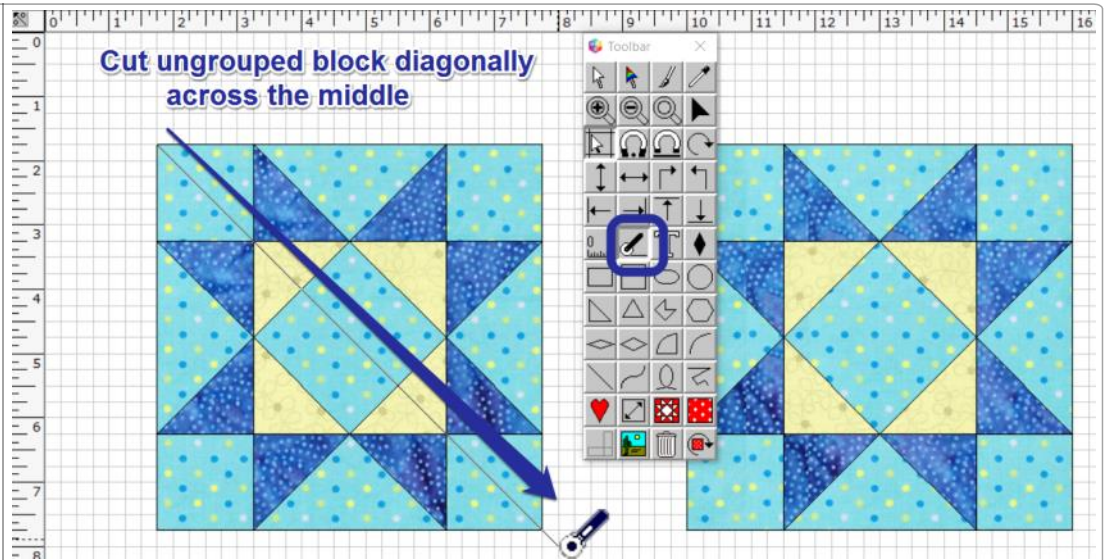


Ohio Star in a Star



Quilt-Pro 6

From the toolbar, select the Rotary Cutter tool and cut all the way through the original block diagonally from left to right.

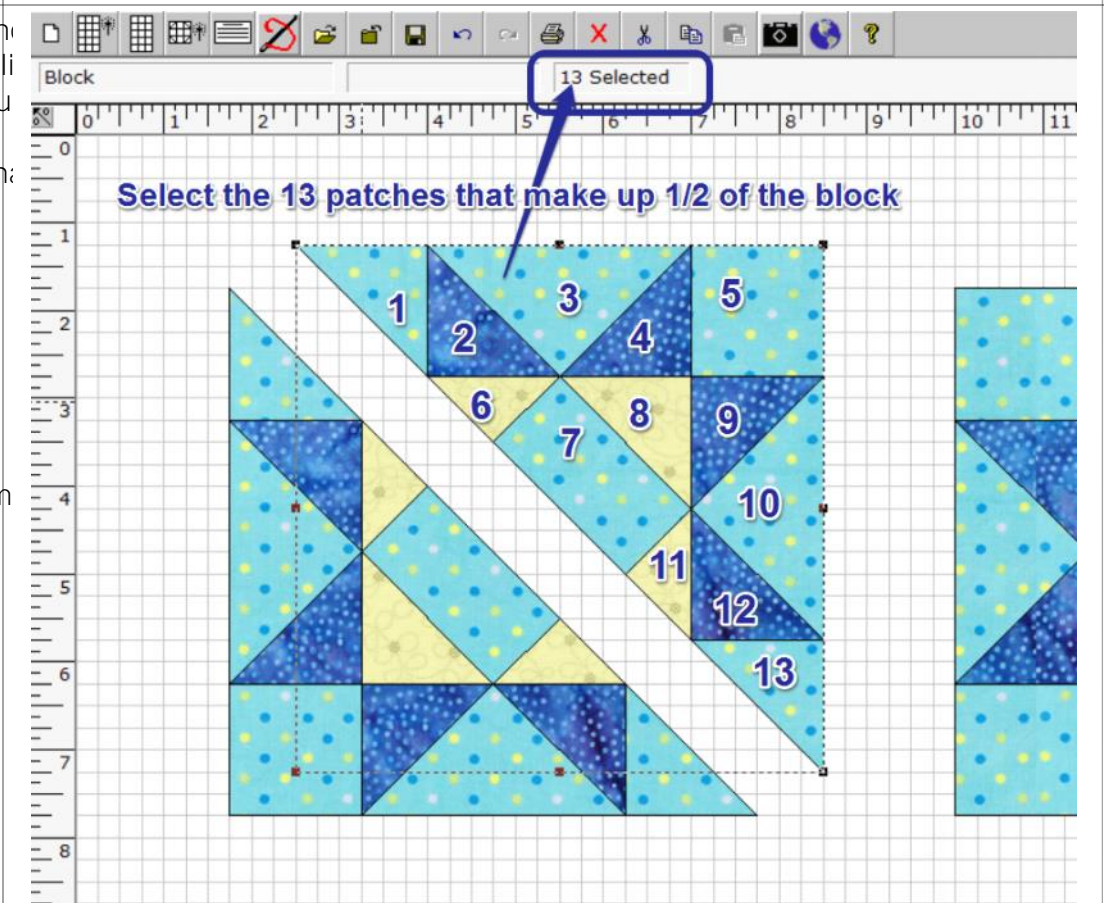


Using the select tool, press and hold the Shift key as you click on each piece that makes up one block triangle. There should be 13 patches per half triangle block.

With the selection box still surrounding the half triangle block, choose Group from the Effects menu.

Move the numbered and grouped triangle away from the ungrouped one.

Number and Group the remaining triangle. The end result will be two 1/2 block and one full block.



Quilt-Pro 6

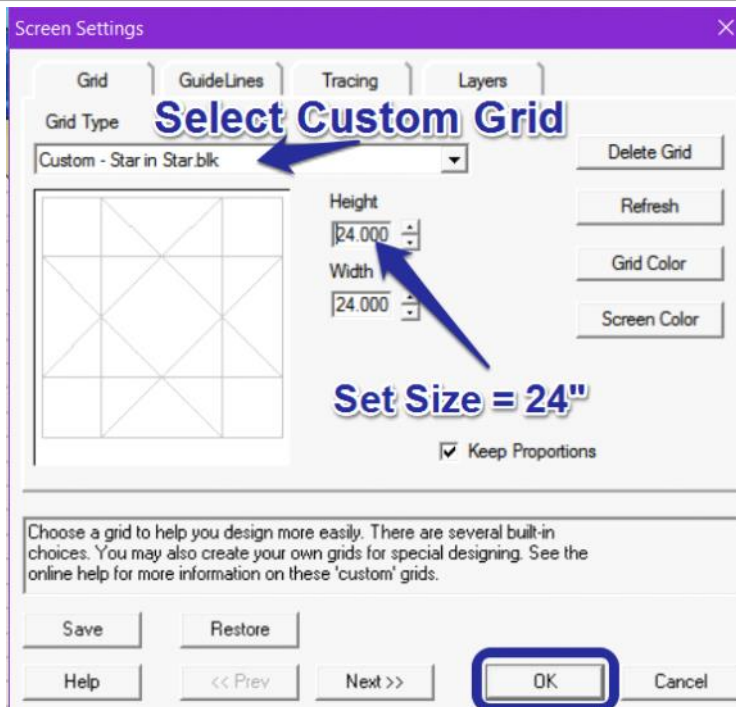
Using your Custom Grid:

From the Options menu, select Screen Settings.

In the Grid tab, select your Custom Grid and set the size 24.00

Click OK.

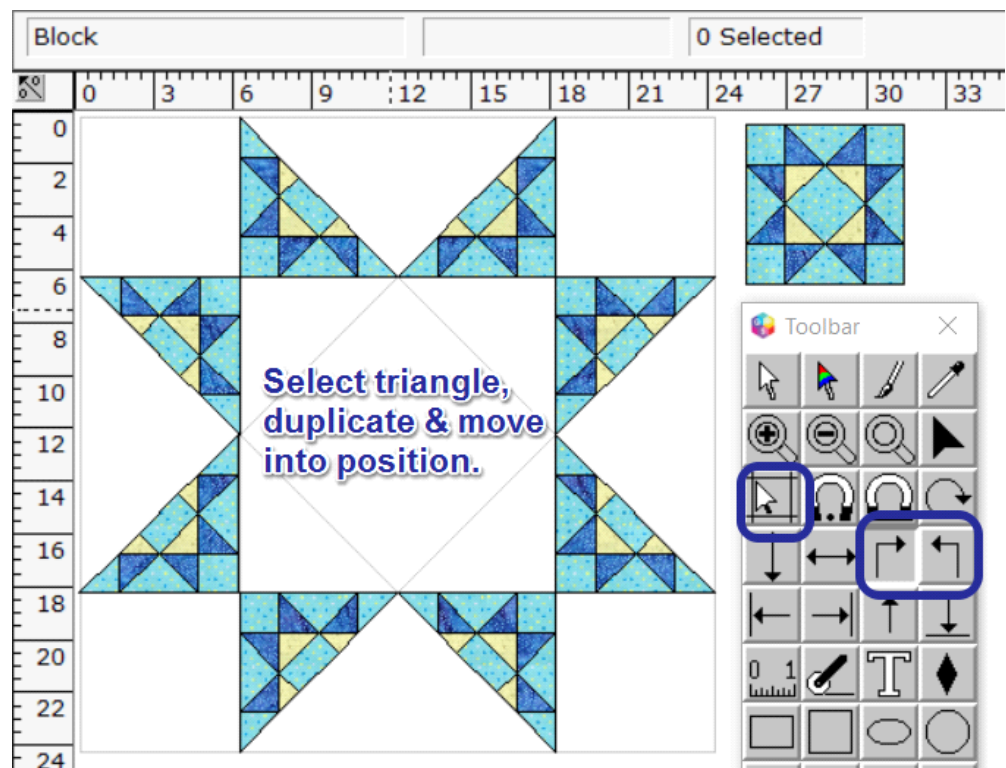
TIP:
If you can not see the entire click the zoom Out tool, on the toolbar, until you can.



Move one of the triangle block into one of the star points and rotate it until it is in the correct position on the same with the second triangle.

Select one of the two triangles and duplicate it. (Edit menu, Duplicate). Move and rotate the duplicate 1/2 block in the same manner until all the star points are filled.

Hint: You may need to unselect the Snap to Grid tool to line up the triangles with the grid.



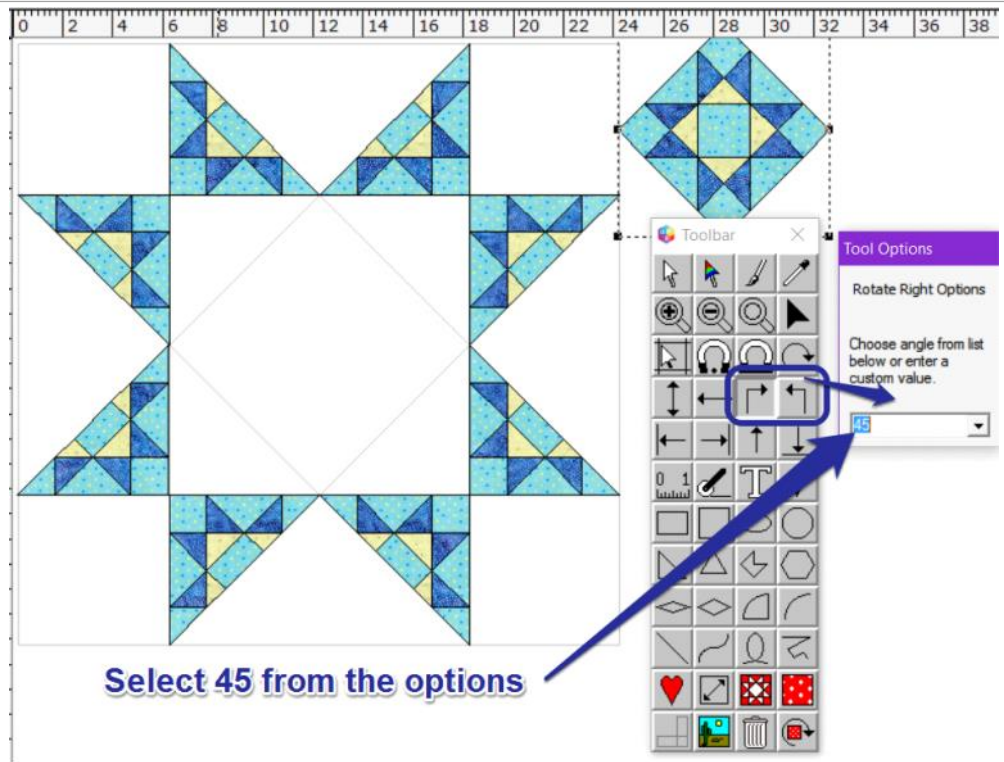
Ohio Star in a Star



Quilt-Pro 6

Select the complete Ohio Star block.

Select the Rotate Left or Right tool change the Rotate Options to 45° and click the Rotate tool again to rotate the block 45°. The block should be on-point as shown in the image.

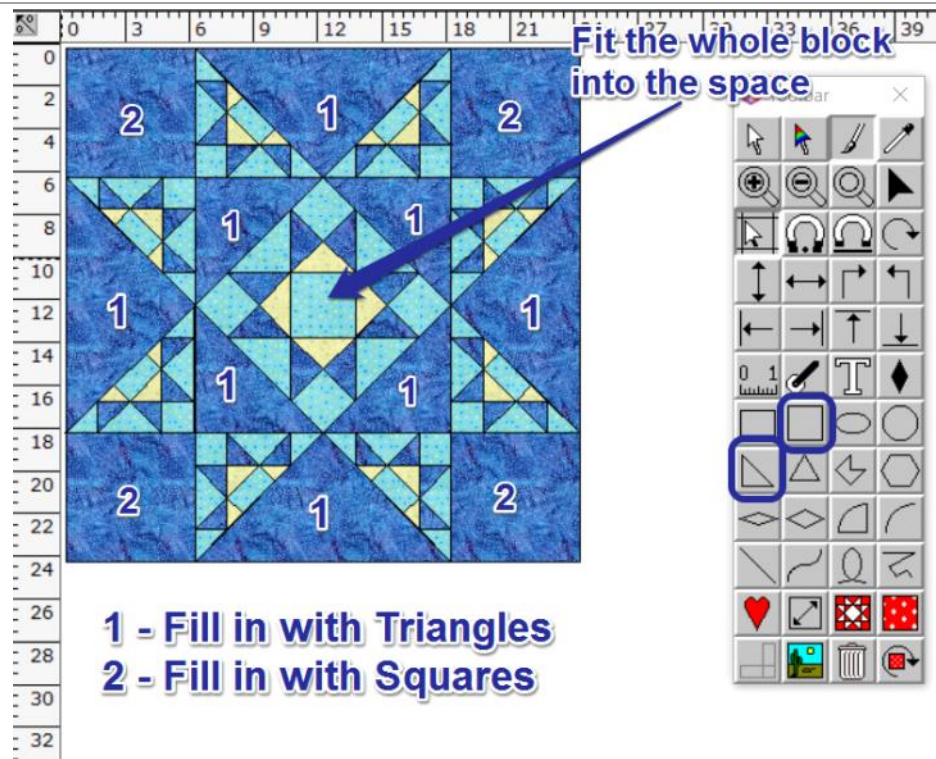


Select 45 from the options

Move the on-point block to the center area as shown in the illustration.

With the block still selected, resize the block until it is in the position shown. To resize the block, use the Select tool and Grab the black selection handles and stretch the block to fit in the area shown. Fill in the rest of the block using the squares and triangle tool.

The completed block will look like this:



Fit the whole block into the space

1 - Fill in with Triangles
2 - Fill in with Squares