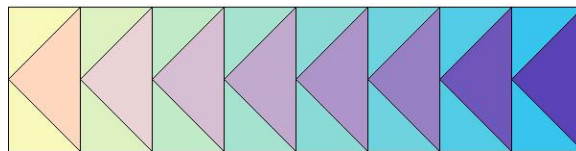


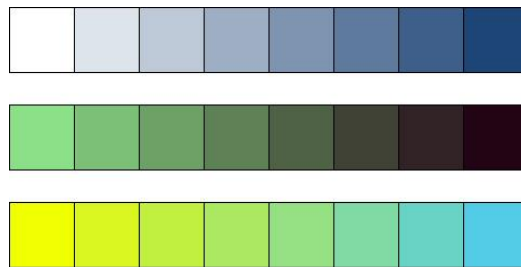
Why Color Gradations?

Color gradation in art is defined as a visual technique of gradually transitioning from one color hue to another, from one shade to another, or even one texture to another. However, choosing the perfect hues of color can be tricky! In the first example below using a solid color background fabric, the gradation from lightest to darkest lends great drama and contrast. In the second example we see a softer, gentler illustration of color when both background and geese are represented in gradations of color light to dark.



Color gradations can lend drama to the simplest of quilt designs

To generate the subtlety of color shown, we need to create our own color palettes. In Quilt-Pro this is equal parts easy and fun! While Quilt-Pro has 256 individual color slots in each color palette, you're unlimited to the number of palettes you can create. The Color Gradations tools make creating these palettes a quick, simple process. Using Color Gradations, you simply choose your beginning and ending colors and let Quilt-Pro's magic fill in the gaps.



You can grade colors from white to any color, from any color to black, and from one color to a completely different one.

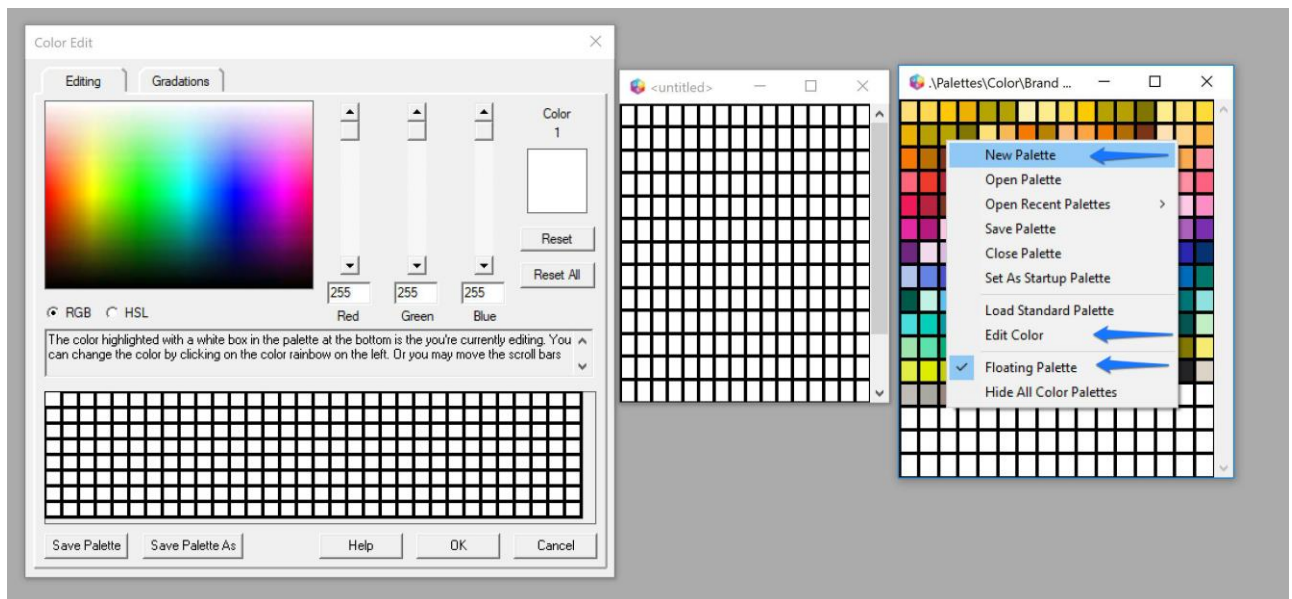
Creating Gradated Color Palettes in Quilt-Pro 6



First, let's create a color palette.

- It's important that the Color Palette be visible and set as floating. If the color palette is not already open on the screen select **Window**, then **Color Palette**.
- Right click on the palette and select **Floating Palette**.
- Right click on the color palette and select **New Palette** from the menu. Quilt-Pro will open a blank palette to customize.
- Right click on the new empty color palette and select **Edit Color**.
- Close the original color palette.

Pro Tip: The Floating Palette setting is most convenient when working with color editing.



The blank color palette is now ready to fill with new custom colors.

Creating Gradated Color Palettes in Quilt-Pro 6

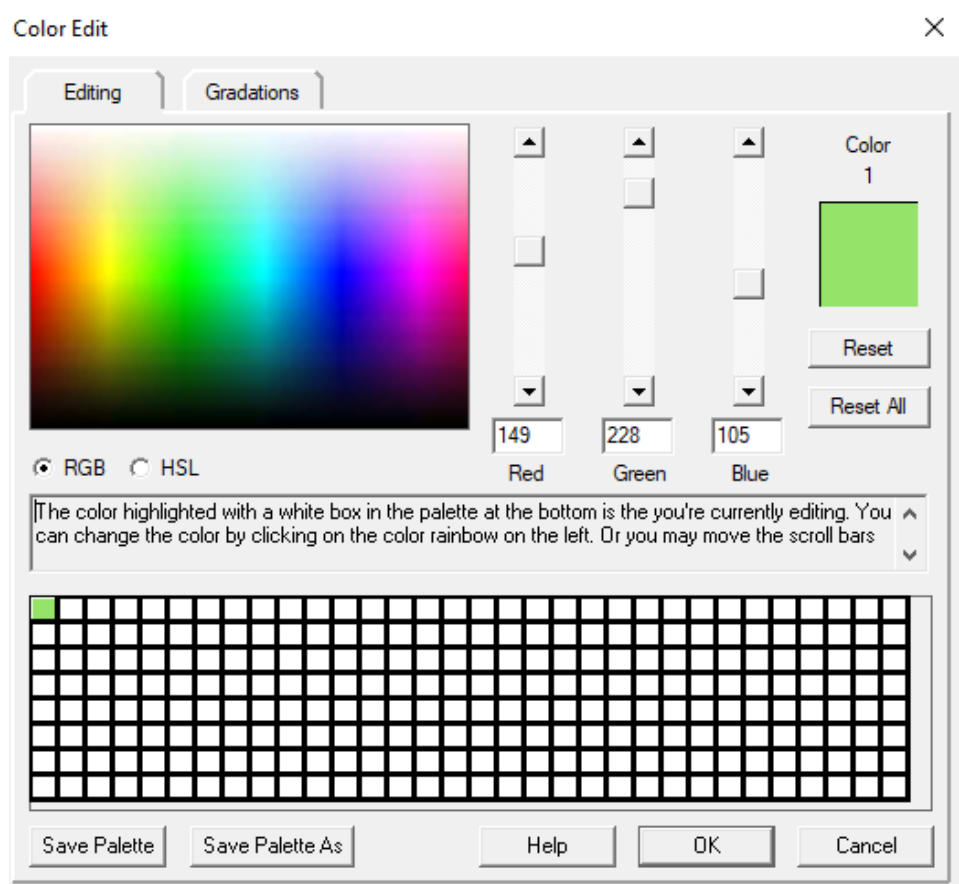


Creating custom color gradations

Click on any empty “cell” in the **Color Editor**. Note they are all reflected as white as no color palette has been defined as yet. There are 256 possible choices to be made! In order to create this custom color palette, it is necessary to populate the cells in the **Color Editor**.

- Click on the first empty “cell” or #1 in the **Color Editor**. Quilt-Pro assigns this as position “0” in the palette. This cell will be the starting point for the defined range of color.
- Click on the **Gradations Tab** in the **Color Editor**.
- Click on the top **Select Color** button. This is the process of defining the beginning color in the gradation of color to come.
- Click on the **Editing** tab.
- Choose a color from the spectrum found in the **Color Mixer** area. Those colors found near the top border are lighter, while colors found near the bottom border are darker and more saturated. For this exercise, just choose any color by placing the cursor above it and clicking.

Pro Tip: Fine tune the color selection by adjusting the sliding RGB (or HSL) tabs.

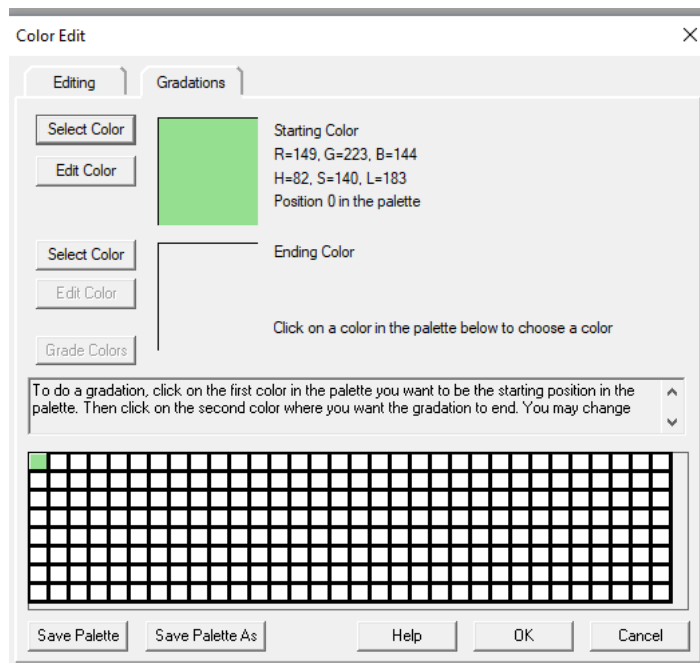


Color #1 is now defined.

Creating Gradated Color Palettes in Quilt-Pro 6



- Click on the **Gradations Tab**
- Click on color cell #1 in the empty palette. Quilt-Pro has assigned this color as position “0” in the new palette. Also, note the color chosen now populates the starting color field.

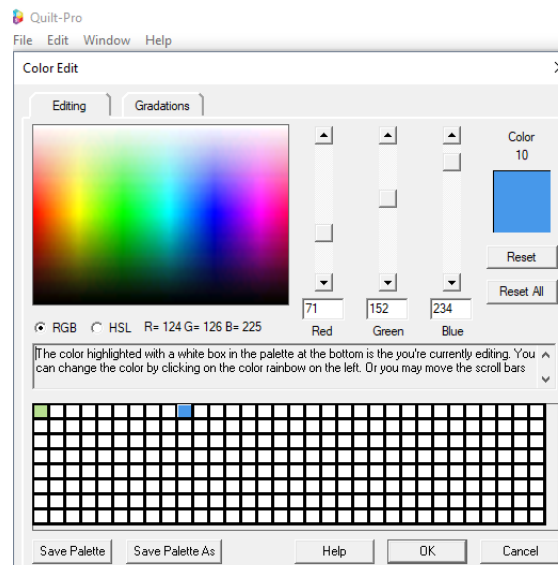


Note: The color chosen now populates the starting color field.

Pro Tip: Choose a small span of cells for graded colors. The shorter the span, the greater the variance between colors.

- Click on **Editing tab**.
- Click on an empty color cell in the palette 8-10 spaces away from the starting color position.
- Pick a color that represents the end of the spectrum of colors to grade.

Pro Tip: Fine tune the color selection by adjusting the sliding RGB (or HSL) tabs.



Creating Gradated Color Palettes in Quilt-Pro 6

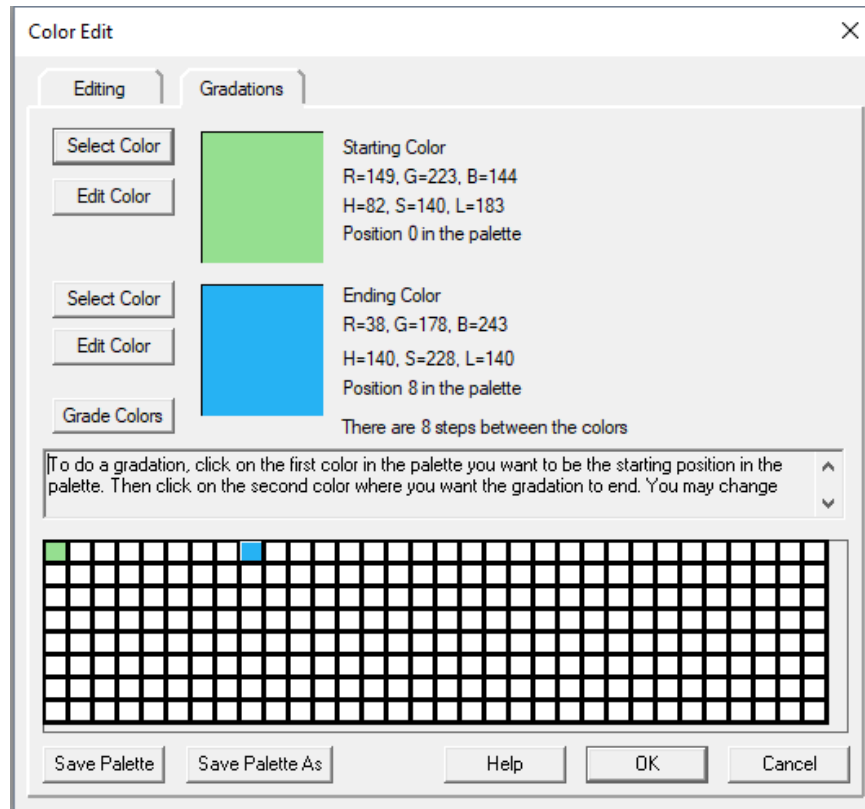


Note: The color chosen now populates the starting color field.

Creating Gradated Color Palettes in Quilt-Pro 6



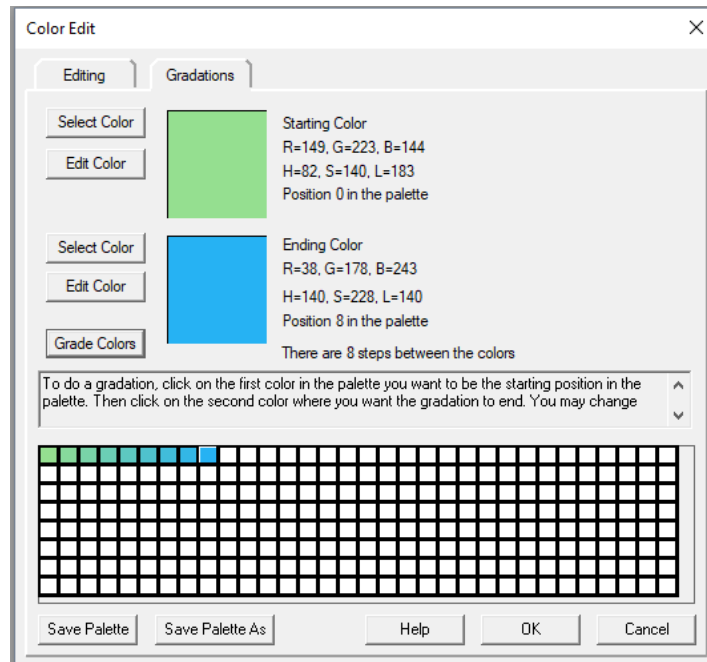
- Click gradation
- Click **Select Color**
- Click the cell the same number of spaces away from the starting color. This color will now populate the ending color position.



Color Editor showing the starting and ending colors. All that's left is grading them!

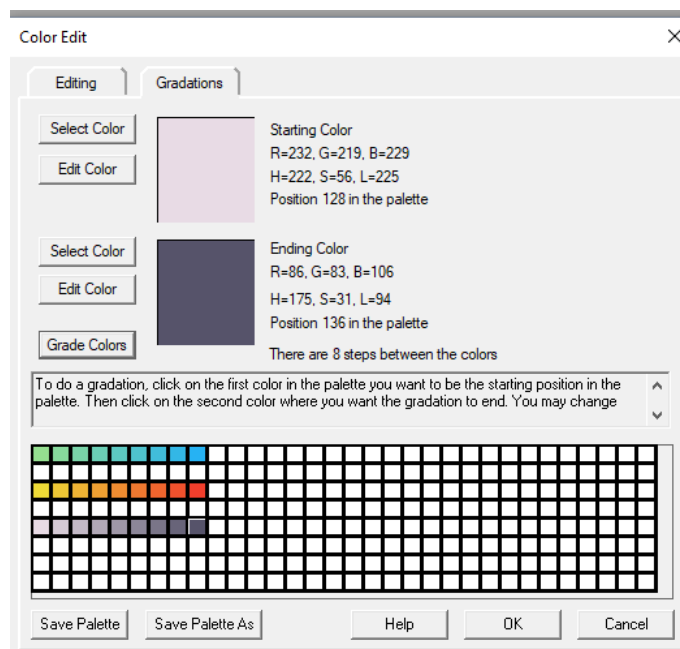
Grading the Colors

- Click the Grade Colors button
- Click OK.
- The new Color Palette will populate with the colors you've chosen.



Magically, Quilt-Pro has graded the colors between the starting and ending colors you chose.

Pro Tip: Create additional small colorways of graded color within the same palette by choosing new sets of cells.

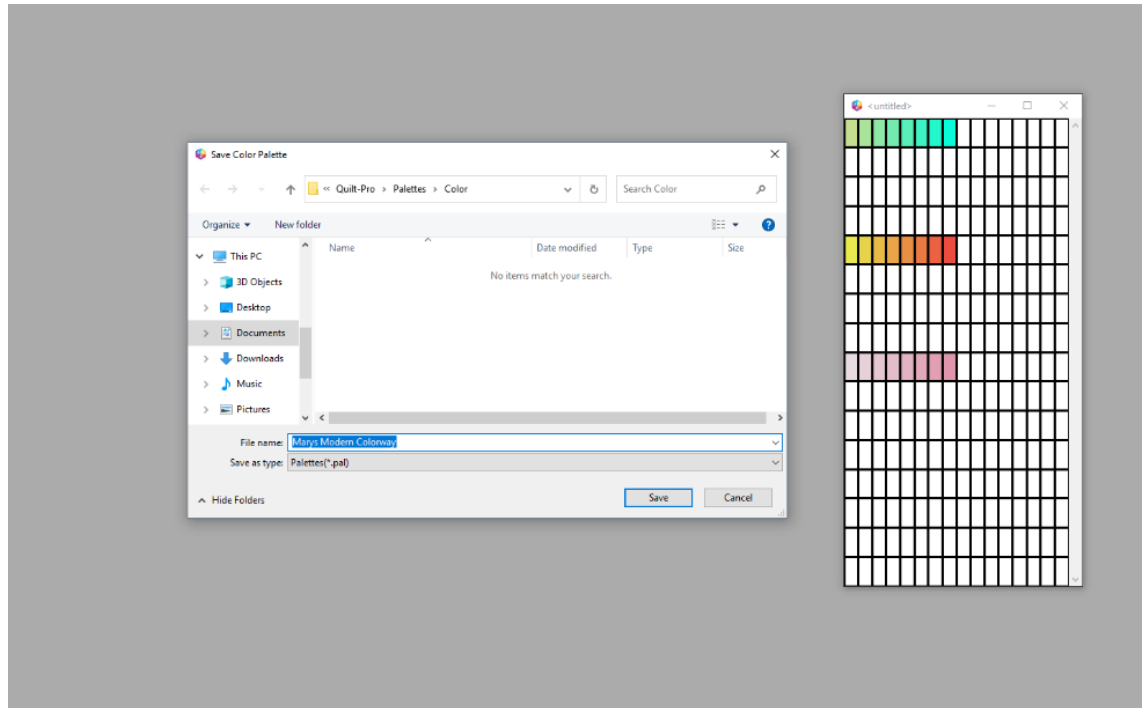


Create as many unique spans of color as needed!

Saving Unique Color Palettes

After creating this unique and personal palette, it may be necessary to save it for future use.

- Right click on the new **Color Palette**.
- Choose **Save Palette**.



This palette has now been saved in a Quilt-Pro specific folder titled "color". It will be easily accessible at any other time!

Creating Gradated Color Palettes in Quilt-Pro 6



If you have any questions about this lesson, please contact Tech Support [here](#).